

 **TEXWRAP**<sup>®</sup>

## Tekkra 200 Series Right Angle Shrink Bundlers

INTERMITTENT MOTION SYSTEMS

R&E

ROBOTICS &  
END OF LINE

# TEKKRA 200 SERIES

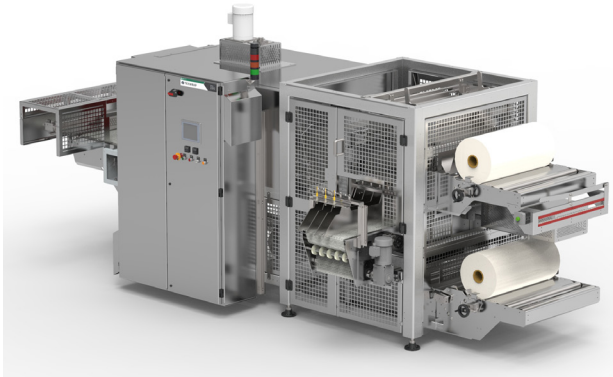
RIGHT ANGLE DUAL ROLL SHRINK BUNDLERS

## The Tekkra 200 is ideal for multipacking rigid containers

The Tekkra 200 Series is an intermittent-motion right angle or side infeed shrink bundler using two rolls of clear film. The 200 Series is designed to create shrink bundled multipacks for retail sale or shipment. Each Tekkra 200 Series machine can be configured using a selection of standard and custom collation systems to achieve the desired multipack configuration. Ideal products are boxes, loaded trays, canisters, and other rigid containers.

With a heavy-duty frame design, the 200 Series can be used in a variety of environments and be run continuously 24/7 resulting in a dependable, reliable machine. Its servo-driven seal assembly creates consistent, reliable seals with a lower cost of ownership compared to similar machines with pneumatic seal assemblies.

The Tekkra 200 Series bullseye-wrapping multipacking machine solution is unique in its ability to shrink wrap products without overheating them. Using the tunnel discharge cooling station, the film is quickly cooled for the preservation of the product. This feature is ideal for multipacking ice cream or other dairy items where temperature control is critical.



### WHY TEXWRAP?

Texwrap's Tekkra shrink bundlers are robust, enough to run continuously, 3 shifts per day, 7 days a week.

Each shrink bundler incorporates independent film feed drive motors for complete film application control at any production rate resulting in less film per package while each shrink tunnel incorporate air velocity and directional controls as well allowing the end user to have the most consistent, best looking, tightest shrink packages in the industry.

*Texwrap's vertically integrated manufacturing process means all our machines are designed, fabricated, and assembled under one roof*

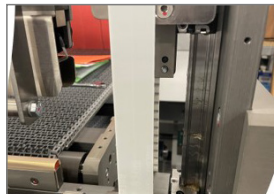
*Made in the U.S.A. quality and customer support, and our industry leading 10-Year Built-Better Backed-Better Warranty ensure the Lowest Total Cost of Ownership in the Industry.*

### TEKKRA RIGHT ANGLE BUNDLERS - FEATURES & BENEFITS



#### SERVO DRIVEN SEAL ASSEMBLY

*All Allen-Bradley servo motion controls in the seal bar, pushers and lane dividers provide better seals and less maintenance.*



#### LINEAR SLIDE DESIGN

*Used in both the seal jaw closure and carriage travel assembly mean longer life and less maintenance over time.*



#### ERGONOMIC POWERED FILM CRADLES

*Film cradles are ergonomically designed to enable faster film changeovers.*



#### ROBUST CONSTRUCTION

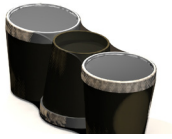
*Heavy-duty welded, tubular frame construction.*



#### ACCESSIBLE SHRINK TUNNEL DESIGN

*With the removal of 4 screws, operator can pull out the trays for maintenance.*

## APPLICATION EXAMPLES



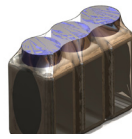
DAIRY / ICE CREAM



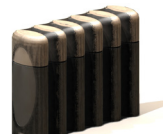
BEVERAGE / JUICE



PHARMACEUTICAL



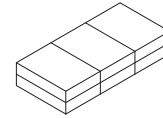
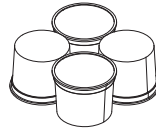
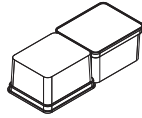
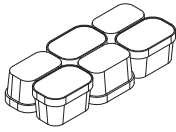
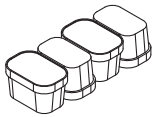
INDUSTRIAL



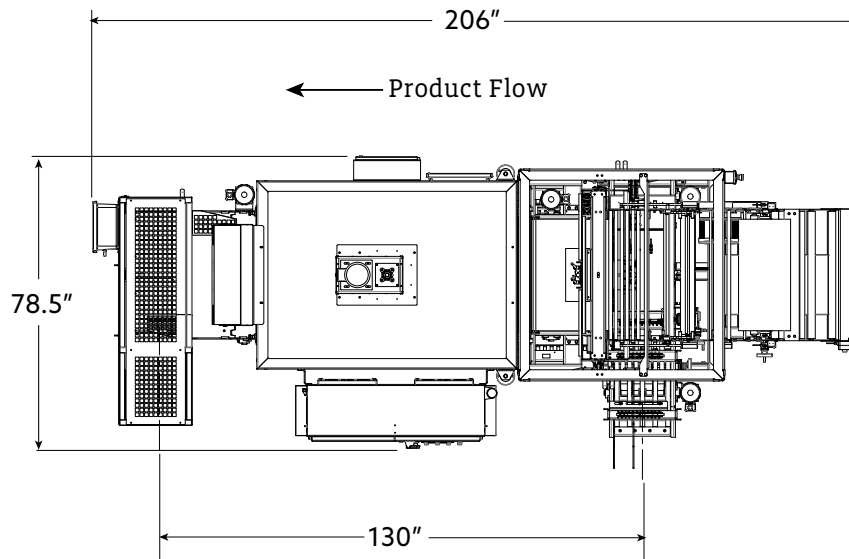
PERSONAL



## ADDITIONAL DAIRY / ICE CREAM EXAMPLES



## TEKKRA SERIES 200 WRAPPER - T-230-70



## TYPICAL PRODUCT SPECIFICATIONS

<b>TEKKRA RIGHT ANGLE BUNDLERS</b>	T-230-60
<b>Maximum Package Size</b> Both Height & Width cannot be at maximum dimension	30"Width x 12"Height x Infinite Length
<b>Maximum Film Width</b>	30"
<b>Maximum Film Roll Diameter</b>	14"
<b>Film Core Size</b>	3"
<b>Tunnel Opening</b>	35"Width x 16"Height
<b>Typical Footprint</b>	165" x 80" x 89"
<b>Seal Assembly</b>	Intermittent Motion
<b>Construction</b>	Heavy-duty welded tubular steel standard; optional corrosion resistant construction for wipe-down environments
<b>Orientation</b>	Right or Left-hand configuration available
<b>Country of Origin</b>	Designed and manufactured in the USA



Texwrap provides high-quality stand-alone machinery and systems to produce commercially attractive shrink wrapped and shrink bundled products that are protected for storage and shipping. We provide one of the most comprehensive lines of cost-effective high-speed shrink wrapping and bundling solutions for a variety of applications including L-bar sealers, continuous motion side sealers, intermittent motion side sealers, lap sealers, and vertical wrappers, as well as tunnels, conveyors, and infeeds. We also specialize in designing and building systems for e-commerce packaging, as well as custom systems to fit unique applications for a variety of shaped products.

We have a network of highly-trained packaging distributor partners to better serve our customers. These partnerships ensure the best machinery and application fit, smooth startup, reliable local service, and long-term return on investment.

USA

525 Vossbrink Dr.

Washington, Missouri 63090

P: 636-239-7424

TOLL FREE: 800-886-7421

E: [Texwrap@ProMachBuilt.com](mailto:Texwrap@ProMachBuilt.com)

W: [Texwrap.com](http://Texwrap.com)

