

Automatic Systems
Catalogue



Automatic Stretch Wrappers

Turntable	
LT Automatic	2
Rotoplat 3000 HD	2
Rotary Arm	
Helix Series	3
Rotary Ring	
Genesis Series	4
Horizontal	
Sotemapack Spiror BW Series	5

Case Packers

Dimac	
Laser Series	6
NOVA	6
Prismatic	
TCS Series	7
TC Series	8
Sotemapack	9-11

Palletizers (TopTier)

Robot Pick 'n Place	12
Low Infeed	12
High Infeed	12

De-Palletizers

Starline B	13
Starline HS	13

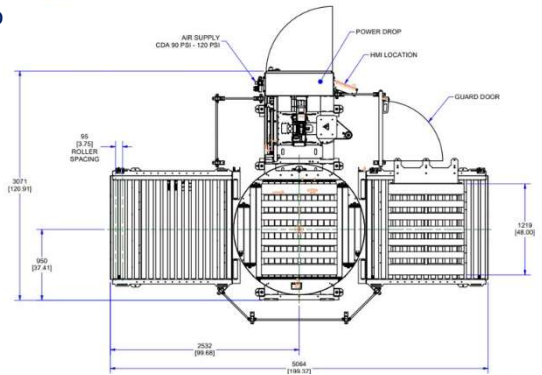
Laser Guided Vehicles (LGV)

OCME Auriga Series	14
--------------------	----

About Us	15
----------	----

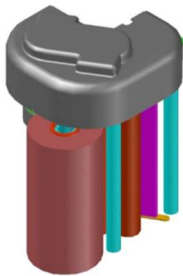
LT Automatic

- 17 RPM machine
- 10" color touch screen
- Allen Bradley PLC and drives
- Small footprint makes it perfect for most operations.
- 15 customizable wrap recipes with Cube Technology
- 5 foot infeed and outfeed conveyors
- Conveyor and main frame adjustable 18" – 24" pass heights
- Automatic load height sensing
- Automatic film tail treatment (Clamp, cut, and wipe do
- Variable turntable speed
- Variable carriage speed
- Safety fencing

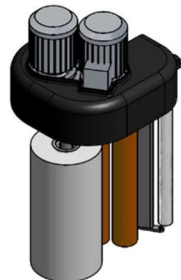


Rotoplat 3000 HD

- 17 RPM machine
- 44 pallet loads per hour
- Pre-stretch: Multi-level variable 0-400%



PGM CARRIAGE



PGS CARRIAGE



PINCERS CLAMP



HOT PLATE SEALER



SPRING CLAMP

Helix Series



Helix 1 EVO
 20 RPM machine
 65 pallet loads per hour



Helix 3 EVO
 28 RPM machine
 62 pallet loads per hour



Helix 4 EVO
 36 RPM machine
 80 pallet loads per hour



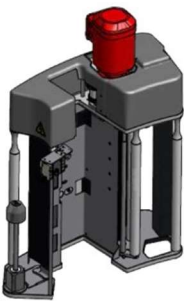
Helix MAX
 24 RPM machine
 90 pallet loads per hour



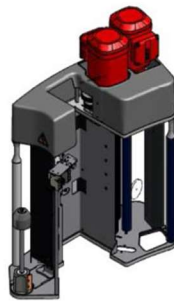
Helix 4/2
 36 RPM machine
 140 pallet loads per hour

Available options:

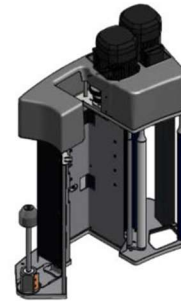
30" Film Carriage, Roping,
 Top Cover Placement, Top
 Pressure Hold Down, Pallet
 Lifter, Auto Corner Board
 Placement and R-Connect®.



PGSM CARRIAGE - EVO



PGSA EVO CARRIAGE



SCSP/2 EVO CARRIAGE



EVO PINCERS CLAMP



HOT PLATE SEALER



EVO SPRING CLAMP



NIP AND TUCK CLAMP

Genesis Series

NEW



Genesis Futura HS
50 RPM machine
110 pallet loads per hour



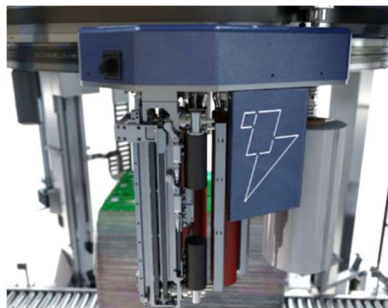
Genesis Futura 40
40 RPM machine
80 pallet loads per hour



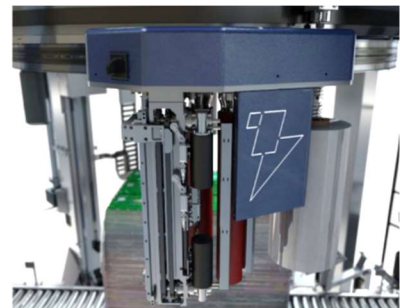
Genesis Futura XL
30 RPM machine
60 pallet loads per hour



Genesis Thunder
65 RPM machine
120 pallet loads per hour



BGS Carriage



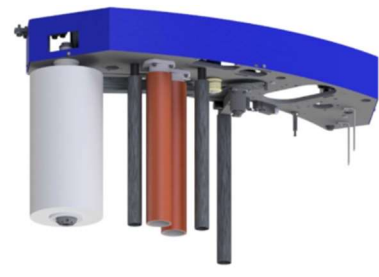
BVS Carriage



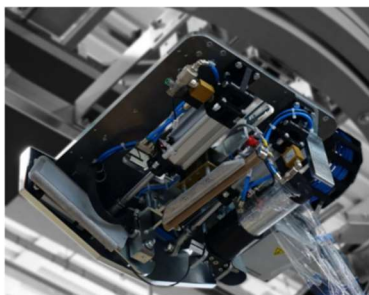
ASCSP Carriage



USCSP/2 Carriage



BSCSP Carriage



Spring Clamp



Nip & Tuck Clamp



Futura Clamp

Sotemapack Spiror BW Series



Spiror BW 1400



Spiror BW 1800



Spiror BW 2200



Spiror BW 2600



Spiror BW 3500

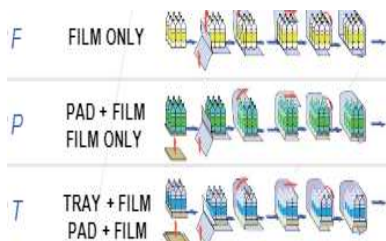
The Sotemapack Spiror BW Series automatic horizontal stretch wrappers are the ideal ring size to wrap insulated metal panels, plaster boards and other building materials.

DIMAC

Laser

Sealing bar style shrink bundling machines with the ability to run neutral film in the following formats at a max rate of 20 PPM

- 20 PPM



CARATTERISTICHE TECNICHE TECHNICAL FEATURES

MACCHINA / MACHINES		LASER F 20 PPM	LASER P 20 PPM	LASER T 20 PPM
lunghezza totale A overall length A	mm inches	6700 266.3	6700 266.3	8460 332.4
larghezza macchina (+ quadro elettrico) B machine width (+ main electrical cabinet) B	mm inches	1260 (+300)/ 49.6 (+11.8)	1260 (+300)/ 49.6 (+11.8)	1260 (+300)/ 49.6 (+11.8)
altezza piano di lavoro working height	min/max (mm) min/max (inches)	1050-1150/ 41.3-45.2	1050-1150/ 41.3-45.2	1050-1150/ 41.3-45.2
potenza totale total power (kW.)	kW	42	42	42
consumo aria air consumption	NI/min	20	20	20
pressione aria air pressure	bar	6	6	6

NOVA

The Dimac Nova is a shrink-wrapping and tray forming machine designed with maximum flexibility. The automatic servo changeover is controlled from the control panel. The new human centered design was created for ease of use and maintenance. The machine includes enhanced options compared to previous models including an option for automatic film splicing

- 30/40 or 50/60 PPM



packs with film only

packs with flat pad and film

packs with tray and film

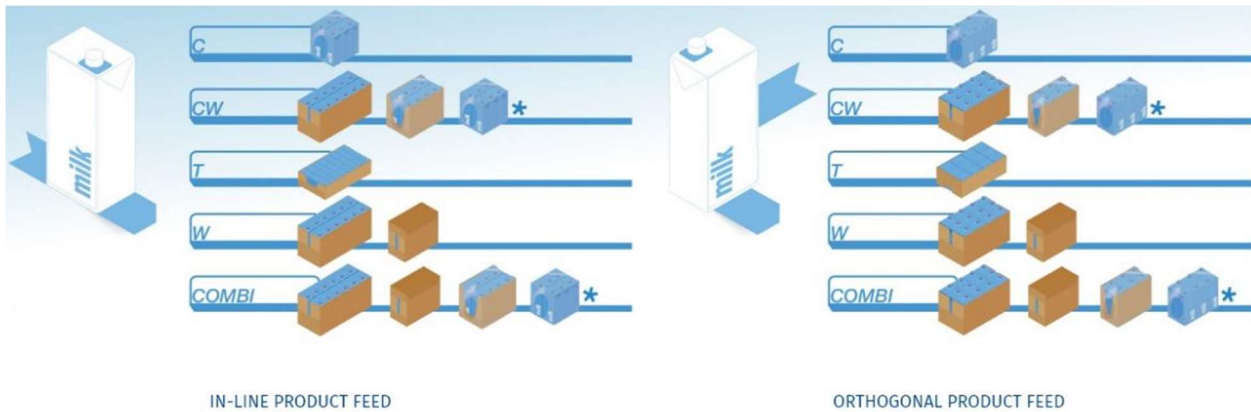
packs with tray only

Prasmatic

TCS Series

Medium-speed automatic shrink wrapping machines and wrap around case packer machines for end line packaging.

- Up to 30 PPM



TCS SERIES TECHNICAL DATA AND FEATURES

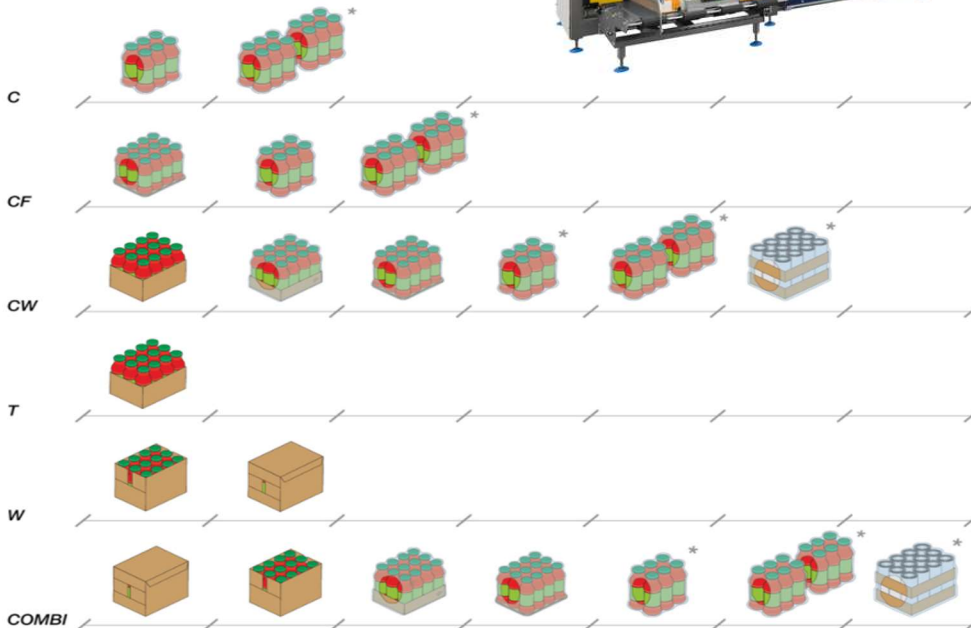
Blanks magazine capacity	450 depending to thickness
Max blank length	1100 mm
Max blank width	600 mm
Max reel diameter	500 mm
Max reel width	680 mm
Max reel weight	80 Kg
Average size changeover time	10 ÷ 15 min. according to the machine model
Extremely compact dimensions	
Brushless servomotor drives	
Fewer and simplified maintenance operations	
Low noise level	
Modular construction, easy accessibility and complete visibility of the production cycle	
Large and easily accessible in line or lateral blanks magazine	
Touch screen control panel	
THE MACHINE CAN BE EQUIPPED/INTEGRATED WITH:	
Automatic Multilane Distributor for non-cylindrical products	
Automatic size changeover	
Stacker unit	
Entirely made of AISI 304 stainless steel and anti-corrosive materials	
Device for managing printed film	
Extractable film unit	
Fully accessible film reels	
Automatic reel change	
Allen-Bradley control system	
Wash down execution	

Prasmatic

TC Series

Combination shrink wrapping and case packaging for medium and high speed production.

- 35 to 85 PPM



* OPZIONALE/OPTIONAL/OPTIONS

TC SERIES TECHNICAL DATA AND FEATURES

Blanks magazine capacity	400-1600 according to thickness and magazine type
Max blank length	1250 mm according to the speed and the machine model
Max blank width	650 mm
Max reel diameter	500 mm
Max reel width	720 mm
Max reel weight	80 Kg
Average size changeover time	10 ÷ 25 min. according to the machine model
Extremely compact dimensions	
Brushless servomotor drives	
Fewer and simplified maintenance operations	
Low noise level	
Modular construction, easy accessibility and complete visibility of the production cycle	
Large and easily accessible lateral blanks magazine	
Touch screen control panel	

THE MACHINE CAN BE EQUIPPED/INTEGRATED WITH:

Automatic Multilane Distributor for non-cylindrical products
Automatic size changeover
Stacker unit
Entirely made of AISI 304 stainless steel and anti-corrosive materials
Device for managing printed film
Extractable film unit
Fully accessible film reels
Automatic reel change
Allen-Bradley control system

Sotemapack

Compacta

Entry-level machines built with solid monobloc technology and high-quality components that provide durability and strength. Operate by manually positioning products on the collation table and pressing a button. The machine is designed for small quantity shrink wrapping of products such as bottles, cans, jars, and tins.

- 15 PPM



T90

Speeds up to 15 packs per minute to individually wrap various products or to group them in bundles which are then wrapped and shrunk. Built for food, beverage and consumer products in bottles, cans, jars, and cans. Available in various versions.

- 15 PPM



TF

Machine wraps 22 packs per minute. Machines includes side sealer bar that closes packs before shrinking. Available with reel width from 12 inches (300 mm) up to 120 inches (3000 mm).

- 22 PPM



Sotemapack

WA 20

Reduce corrugated costs, required footprint, and costly conveying and integration charges. At 20 PPM, the Sotemapack WA 20 compact wrap around case packer simplifies case packing flexible bags. It's perfect for stand up pouches! This is the all in one solution that does it all!

- Combi (tray and film)
- 20 PPM



WA 25

Packs up to 25 packs per minute. Beginning with a flat cardboard, our machines automatically group the products and form a cardboard case around them by folding and gluing the edges. Our case packers were engineered for food, beverage, and consumer products in bottles, cans, jars, detergent containers, vacuum bags, jars, and more.

- Combi (tray and film)
- 25 PPM



MORBIWRAP

With a 20 pack per minute capacity, the Sotemapack Morbiwrap case packer machine is designed for the stacking and subsequent packaging of punched cardboard of soft products (pillow pack, wet wipes, etc.).

- Combi (tray and film)
- 20 PPM



Sotemapack



TOTALPACK 50/80

- Six sided closure bagging system



TOTALPACK 130

- Six-sided closure bagging system
- Produces up to 6 totally closed packs/min



TOTALPACK 150

- Six-sided closure bagging system
- Produces up to 6 totally closed packs/min



STRETCHPACK 130S

- Automatic horizontal shrink bundler with manual product loading.
- Wraps around four sides with stretched PE foil to provide a stable package without shrink.
- Available in manual or automatic product feeding.



STRETCHPACK 130S IL

- Automatic horizontal shrink bundler with a programmable high speed in line product in-feed pusher system.
- Wraps around four sides of panels, insulation boards, trays, boxes and similar products with stretched PE foil to provide a stable package without shrink.
- Available in manual or automatic product feeding.



STRETCHPACK 130 T90

- Automatic horizontal stretch bundler machine with 90 degree product in-feed.
- Wraps around four sides of panels, insulation boards, trays, boxes and similar products with stretched PE foil to provide a stable package without shrink.
- Available in manual or automatic product feeding.

TOPTIER

Robot Pick 'n Place

- 10 – 12 cases per minute
- Smallest footprint available for automatic palletizing: only 89" wide by 129" long
- Patented Sweep Turn infeed builds precise rows at rates higher than competitive solutions
- All products 100% bottom supported
- Nearly any product can be palletized including open top display cases, telescoping lid cases, and trays
- 6"x6" to 24"x16" products handled automatically
- Allen Bradley controls with servo controlled pick and place motion
- 9" PanelView HMI with intuitive graphics interface to manage patterns and tune machine functions
- Category 3 PLd safety standard with controlled entrance preventing hazard exposure
- Configurable to fit in any space with three load exit or entrance sides
- Automatic pallet handling, pallet dispensing, load exit, and sheet insertion modular options available



Low Infeed

- Rates: 1-3 layers per minute
- Products: case, tray, trayless, open top, lidded, overwrapped or unwrapped, bundles, nested, display packs
- Infeed height: 23" to 60"
- Min. case dimension: 4.5"
- Max. case dimension: 29"
- Max. case height: 36"
- Standard layer weight: 300 lbs.
- Min. layer dimension: 38"
- Max. layer dimension: 50"
- Standard load height: 60" or 72"
- Minimum footprint: 162" x 115"
- Typical footprint: 233" x 155"



High Infeed

- Rates: 1-4 layers per minute
- Products: case, tray, trayless, open top, lidded, overwrapped or unwrapped, bundles, nested, display packs
- Infeed height: 108" to 148"
- Min. case dimension: 4.5"
- Max. case dimension: 29"
- Max. case height: 36"
- Standard layer weight: 300 lbs.
- Min. layer dimension: 38"
- Max. layer dimension: 50"
- Standard load height: 72"
- Minimum footprint: 80" x 80"
- Typical footprint: 190" x 142"



ROBOPAC

Starline B

Our fixed pallet automatic de-palletizer comes complete with a bottle outlet bench. Layer transfer is carried out by inflatable rods for glass bottles or plastic containers, or by a magnetic head for metal containers. It is suitable for medium-high outputs.



TRANSLATING CARRIAGE

The functioning is practical and reliable by means of a translating carriage. Applied to the frame, the containers are pushed on a platform that will raise to the loading height of the accumulation bench (the latter will be always in line with feeding).

The Starline B fixed pallet automatic depalletizer features an independent, compacting device, which keeps the container layers in position during the drawing phase and the intermediate layer-pad removing phase.

The gripping head may be of different kinds, according to the container to be depalletized. It may be composed of inflatable rods, pneumatic grippers, mechanical grippers, and perimetric pads.



Starline HS

The Starline HS automatic de-palletizer machine removes crates from the pallet, deposits them on a bench, and brings them on a unique row.

Flexibility and reliability are the main features of this machine. Format change over operations are fast and requested maintenance is limited. All the movements are carried out by watertight bearings or self-lubricating bushes.

Available options: empty pallet storage, parking roller for pallets to depalletize



TRANSLATING CARRIAGE

This automatic depalletizer machine's translating carriage removes crates from the pallet, deposits them on a bench, and brings them on a unique row.



OCME



Auriga PS

- Auriga PS is an automatic laser guided vehicle with covering forks. In low position, the forks cover the rear wheels just like an electrical pallet truck.
- Extremely compact and agile machine
- The load capacity of Auriga 15 PS is 3,300 lbs. (1500 kg) with a 23.6 in. (600 mm) load center.
- The machine is 32.3 in. (820 mm) wide and 86.6 in (2200 mm) long.
- Forks are lifted from 40 to 118 in. (1000 to 3000 mm) at maximum speed of 67 in. (1700 mm) per second.



Auriga CT

- Auriga CT are counterbalanced vehicles with forks (like front forklift truck).
- Load capacity of Auriga CT goes from 1750 lbs. (800 kg) for Auriga 8 CT up to 9,900 lbs. (4500 kg) for Auriga 45 CT.
- The smallest version, Auriga 8 CT, has reduced dimensions, whereas the largest version, Auriga 45 CT, 70 in. (1800 mm) large and 171 in. (4350 mm) long.
- Forks are lifted from 39 to 197 in. (1000 to 5000 mm) with maximum speed of 67 in. (1700 mm)/second.



Auriga Z

- The Auriga Z is a laser guided forklift vehicle, equipped with load stabilizers that increase the load capacity without using bulky mechanical structures.
- The load capacity of Auriga Z goes from 5,500 lbs. (2.500 kg) for Auriga 25 Z, up to 1,300 lbs. (6.000 kg) for Auriga 60 Z.
- Forks are lifted from 40 to 80 in. (1000 to 2000 mm), with a maximum speed of 70 in. (1700 mm) per second.



Auriga C

- Auriga C is equipped with chains, rollers, or rubber belt conveyors.
- Load capacity of Auriga C goes from a minimum of 3,300 lbs. (1500 kg) for Auriga C1 to maximum of 11,000 lbs. (5000 kg) for Auriga C4.
- The conveyors used can be customized to transport different pallets. Maximum speed is 67 in. (1700 mm)/second.



Auriga RT-H

- Auriga RT-H is our industrial, fully automated reach truck designed to lift heavy loads to high heights.
- Able to move in-between shelving placed at a distance of 11 ft. (3.300 mm) from one another. This vehicle uses a Triplex lifting mast for elevation up to 28 ft. (8.500 mm).
- In order to increase the number of working hours, the minimum capacity of the batteries is 620 Ah. Maximum speed in automatic mode is 5.5 ft. (1.700 mm)/second.

For information on our full line of semi-automatic stretch wrappers and case equipment, see our *Semi-automatic Catalogue*.



Robopac USA
2150 Boggs Road, Suite 200
Duluth, GA 30096
Copyright © 2023 Robopac USA, All rights reserved.